

COMPUTED TOMOGRAPHY (CT) SCANS

Exam Reference / Protocol Guidelines Abdomen and Pelvis



INTERMOUNTAIN
MEDICAL IMAGING

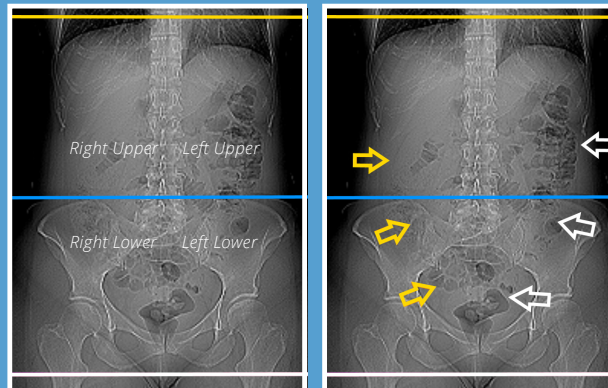
SCHEDULING (208) 954-8150 | FAX (208) 947-3322

WWW.ABOUTIMI.COM

A CT Abdomen & Pelvis begins at the yellow line and ends at the white line.

A CT Abdomen begins at the yellow line and ends at the blue line.

A CT Pelvis begins at the blue line and ends at the white line.



A CT Abdomen excludes the lower portions of the large and small intestines, where the appendix and common sites for diverticulitis are often found. The yellow arrows in the diagram point to common sites for the appendix, and the white arrows point to common sites for diverticulitis.

DISCLAIMER: The exams listed here are suggestions. Each patient is unique and the proper scan depends on many factors including level of clinical suspicion, recent prior exams, theorized mechanism of disease, and nuances of clinical presentation.

Body Part	Indication	Exam that may be indicated	Contrast	CPT Code	Additional Info
ABDOMEN/PELVIS	Abdominal Pain Appendicitis Bowel Obstruction Diverticulitis	CT Abdomen & Pelvis	PRN or With	74177	
ABDOMEN/PELVIS	Kidney Stone Flank Pain Painful Hematuria	CT Abdomen & Pelvis	PRN or Without	74176	
ABDOMEN	Upper abdominal pain Pancreatitis (also see Pancreas section)	CT Abdomen	PRN or With	74160	

Body Part	Indication	Exam that may be indicated	Contrast	CPT Code	Additional Info
PELVIS	Pelvic pain	CT Pelvis	PRN <i>or</i> With	72193	
PELVIS	Hip pain	CT Pelvis	PRN <i>or</i> Without	72192	
LIVER	Liver mass/lesion Cirrhosis Hepatoma	CT Abdomen <i>or</i> CT Abdomen & Pelvis	PRN <i>or</i> Without & With	74170 <i>or</i> 74178	
PANCREAS	Pancreatic mass/lesion Pancreatitis	CT Abdomen <i>or</i> CT Abdomen & Pelvis	PRN <i>or</i> Without & With	74170 <i>or</i> 74178	
KIDNEYS	Renal mass	CT Abdomen <i>or</i> CT Abdomen & Pelvis	PRN <i>or</i> Without & With	74170 <i>or</i> 74178	
KIDNEYS/BLADDER	Painless/Persistent Hematuria Bladder cancer	CT Abdomen & Pelvis	PRN <i>or</i> Without & With	74178 76377 (3D)	"IVP protocol" Add 3D
ADRENAL GLANDS	Adrenal nodule/mass	CT Abdomen	PRN <i>or</i> Without & With	74170	
SMALL INTESTINES	Crohn's disease Inflammatory bowel disease Small bowel lesion Iron-deficiency anemia	CT Abdomen & Pelvis	PRN <i>or</i> With	74177	"Enterography protocol"
GI SYSTEM	GI Bleeding	CT Angio Abdomen & Pelvis	With and Without	74174	
AORTA	Aortic aneurysm/dissection	CT Angio Chest <i>or</i> CT Angio Chest & Abdomen <i>or</i> CT Angio Chest, Abdomen & Pelvis <i>or</i> CT Angio Abdomen <i>or</i> CT Angio Abdomen & Pelvis	With and Without	71275 (chest) 74175 (abdo- men) 74174 (Abdo- men Pelvis)	Varies based on region of interest
RENAL ARTERIES CELIAC ARTERY	Renal artery stenosis/aneurysm Celiac artery stenosis/aneurysm	CT Angio Abdomen	With and Without	74175	
MESENTERIC ARTERIES	Mesenteric artery occlusion	CT Angio Abdomen & Pelvis	With and Without	74174	
CHEST, ABDOMEN, & PELVIS	Trauma Malignancy Sepsis	CT Chest, Abdomen, & Pelvis	PRN <i>or</i> With	71260 and 74177	